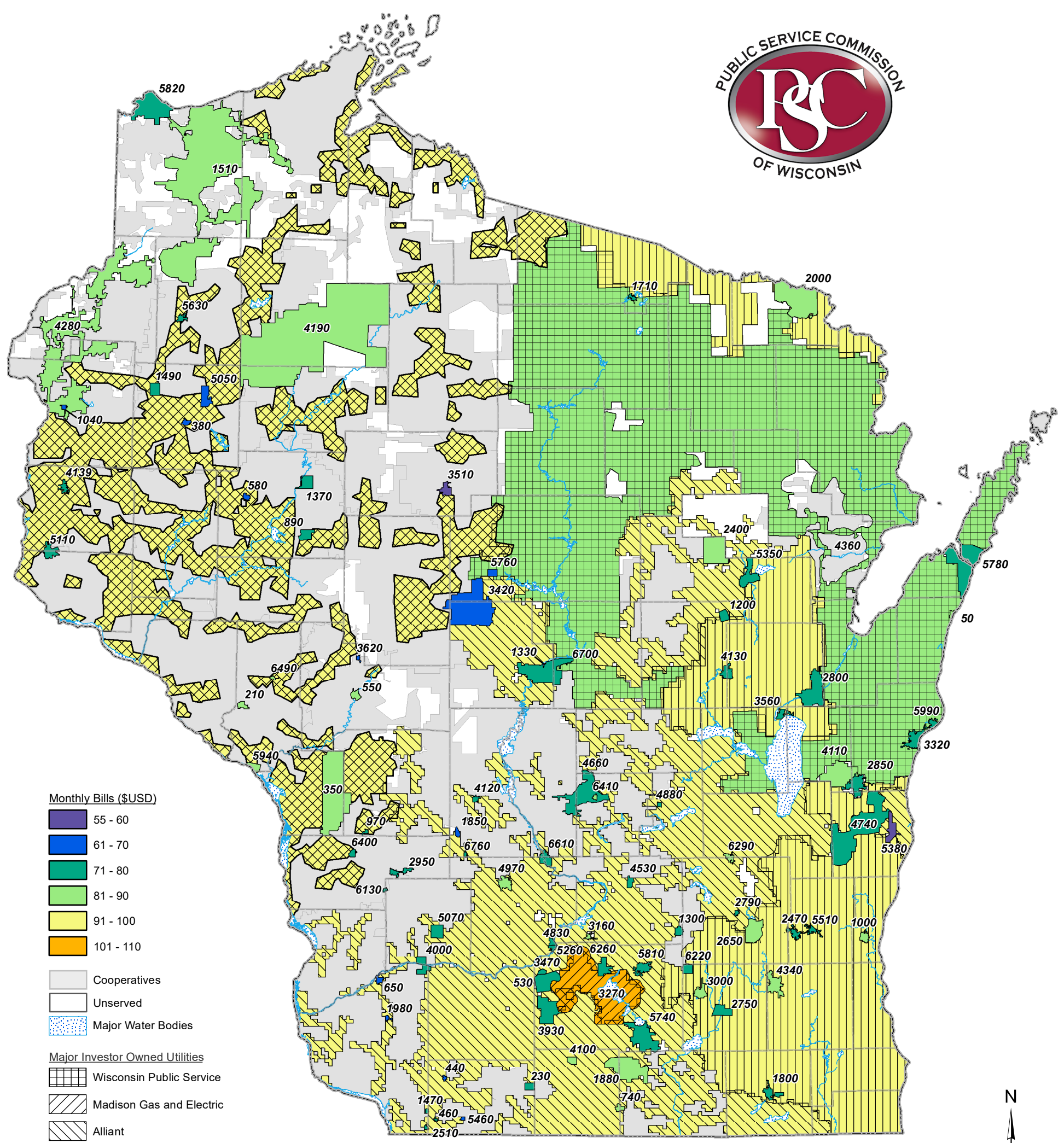
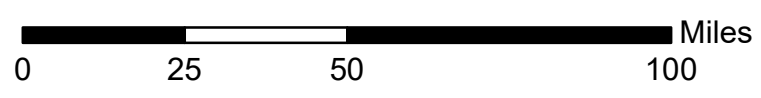


# 2017 Average Residential Electric Monthly Bills

(based on 650 kWh)



- Monthly Bills (\$USD)**
- 55 - 60
  - 61 - 70
  - 71 - 80
  - 81 - 90
  - 91 - 100
  - 101 - 110
- Cooperatives**
- Unserved**
- Major Water Bodies**
- Major Investor Owned Utilities**
- Wisconsin Public Service
  - Madison Gas and Electric
  - Alliant
  - We Energies
  - Xcel Energy



**Utility Name and PSC ID Code**

ALGOMA UTILITY COMMISSION	50	CUBA CITY ELECTRIC & WATER UTILITY	1470	MADISON GAS & ELECTRIC CO.	3270	PIONEER POWER & LIGHT CO.	4660	TWO RIVERS WATER & LIGHT UTILITY	5990
ARCADIA ELECTRIC & WATER UTILITY	210	CUMBERLAND MUNICIPAL UTILITY	1490	MANITOWOC PUBLIC UTILITIES	3320	PLYMOUTH UTILITIES	4740	VIOLA MUNICIPAL WATER & ELECTRIC UTILITY	6130
ARGYLE MUNICIPAL ELECTRIC & WATER UTILITY	230	DAHLBERG LIGHT & POWER CO.	1510	MARSHFIELD ELECTRIC & WATER DEPT	3420	PRAIRIE DU SAC MUNICIPAL ELECTRIC & WATER	4830	WATERLOO WATER & LIGHT COMMISSION	6220
BANGOR MUNICIPAL UTILITY	350	EAGLE RIVER LIGHT & WATER COMMISSION	1710	MAZOMANIE ELECTRIC UTILITY	3470	PRINCETON MUNICIPAL WATER & ELECTRIC UTILITY	4880	WAUNAKEE WATER & LIGHT COMMISSION	6260
BARRON LIGHT & WATER UTILITY	380	ELKHORN LIGHT & WATER	1800	MEDFORD ELECTRIC UTILITY	3510	REEDSBURG UTILITY COMMISSION	4970	WAUPUN PUBLIC UTILITIES	6290
BELMONT MUNICIPAL WATER & ELECTRIC UTILITY	440	ELROY MUNICIPAL ELECTRIC & WATER UTILITY	1850	MENASHA ELECTRIC & WATER UTILITIES	3560	RICE LAKE MUNICIPAL WATER & ELECTRIC UTILITY	5050	WESTBY MUNICIPAL ELECTRIC & WATER UTILITY	6400
BENTON MUNICIPAL ELECTRIC & WATER UTILITY	460	EVANSVILLE WATER & LIGHT	1880	MERRILLAN MUNICIPAL ELECTRIC & WATER UTILITY	3620	RICHLAND CENTER ELECTRIC UTILITY	5070	WHITEHALL MUNICIPAL ELECTRIC UTILITY	6490
BLACK EARTH ELECTRIC UTILITY	530	FENNIMORE WATER & LIGHT PLANT	1980	MOUNT HOREB ELECTRIC UTILITY	3930	RIVER FALLS MUNICIPAL UTILITY	5110	WISCONSIN DELLS MUNICIPAL ELECTRIC UTILITY	6510
BLACK RIVER FALLS MUNICIPAL ELECTRIC & WATER	550	FLORENCE UTILITY COMMISSION	2000	MUSCODA LIGHT & WATER UTILITY	4000	SAUK CITY ELECTRIC UTILITY	5260	WISCONSIN ELECTRIC POWER CO.	6630
BLOOMER ELECTRIC UTILITY	580	GRESHAM MUNICIPAL LIGHT & POWER UTILITY	2400	NEW GLARUS LIGHT & WATER WORKS	4100	SHAWANO MUNICIPAL UTILITIES	5350	WISCONSIN POWER & LIGHT	6680
BOSCOBEL MUNICIPAL UTILITIES	650	HARTFORD UTILITIES	2470	NEW HOLSTEIN PUBLIC UTILITY	4110	SHEBOYGAN FALLS UTILITIES	5380	WISCONSIN PUBLIC SERVICE CORP.	6690
BRODHEAD WATER & LIGHT COMMISSION	740	HAZEL GREEN MUNICIPAL UTILITY	2510	NEW LISBON ELECTRIC & WATER UTILITY	4120	SHULLSBURG ELECTRIC UTILITY	5460	WISCONSIN RAPIDS WATERWORKS & LIGHT	6700
CADOTT LIGHT & WATER MUNICIPAL UTILITY	890	HUSTISFORD UTILITIES	2650	NEW LONDON ELECTRIC & WATER UTILITY	4130	SUNGER UTILITIES	5510	WONEWOC ELECTRIC & WATER UTILITY	6760
CASHOTN MUNICIPAL ELECTRIC & WATER UTILITY	970	JEFFERSON WATER & ELECTRIC DEPT	2750	NEW RICHMOND MUNICIPAL ELECTRIC UTILITY	4139	SPOONER MUNICIPAL UTILITIES	5630		
CEDARBURG LIGHT & WATER COMMISSION	1000	JUNEAU UTILITY COMMISSION	2790	NORTH CENTRAL POWER CO.	4190	STOUGHTON ELECTRIC UTILITY	5740		
CENTURIA MUNICIPAL ELECTRIC UTILITY	1040	KAUKAUNA ELECTRIC & WATER UTILITY	2800	NORTHERN STATES POWER, WISCONSIN	4220	STRAITFORD MUNICIPAL WATER & ELECTRIC UTILITY	5760		
CLINTONVILLE WATER & ELECTRIC UTILITY	1200	KIEL UTILITIES	2850	NORTHWESTERN WISCONSIN ELECTRIC CO.	4280	STURGEON BAY UTILITIES	5780		
COLUMBUS WATER & LIGHT DEPT	1300	LA FARGE MUNICIPAL ELECTRIC UTILITY	2950	OCONOMOWOC UTILITIES	4340	SUN PRAIRIE WATER & LIGHT COMMISSION	5810		
CONSOLIDATED WATER POWER CO.	1330	LAKE MILLS LIGHT & WATER DEPT	3000	OCONTON FALLS WATER & LIGHT COMMISSION	4360	SUPERIOR WATER LIGHT & POWER CO.	5820		
CORNELL MUNICIPAL WATER & ELECTRIC UTILITY	1370	LODI MUNICIPAL LIGHT & WATER UTILITY	3160	PARDEVILLE ELECTRIC UTILITY	4530	TREMPEALEAU MUNICIPAL ELECTRIC & WATER UTIL	5940		

Service territory boundaries are approximate and based on information supplied by the utilities. This map should be viewed as approximate and contains no guarantee of accuracy.